

ROLEX

Next-Gen Formica at Its Best

Intelligent Materials for Intelligent Living

ROLEX

2024-2025

MADE IN INDIA



ROLEX

Next-Gen Formica at Its Best

Intelligent Materials for Intelligent Living





ROLEX

Next-Gen Formica at Its Best

In the pursuit of creating a truly smart living environment, we have incorporated advanced materials that not only enhance the aesthetic appeal but also contribute to the overall intelligence of the space. High-quality laminates with anti-microbial properties, scratch resistance, and easy maintenance are at the forefront of our collection. These intelligent materials ensure longevity and durability, meeting the needs of the modern, fast-paced lifestyle.

→ METALLIC

Modernize Your World
with Formica's Metallic Mastery



MF 06 | Golden Metal Foil



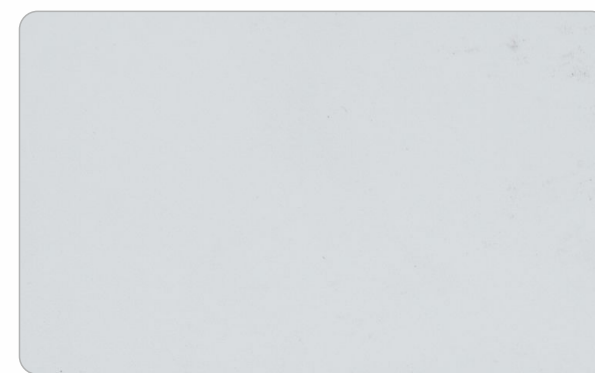
MF 01 | Silver Metal Foil

ANTI FINGERPRINT

Feel the whisper-soft embrace of a laminate surface where touch meets technology in a symphony of smoothness.



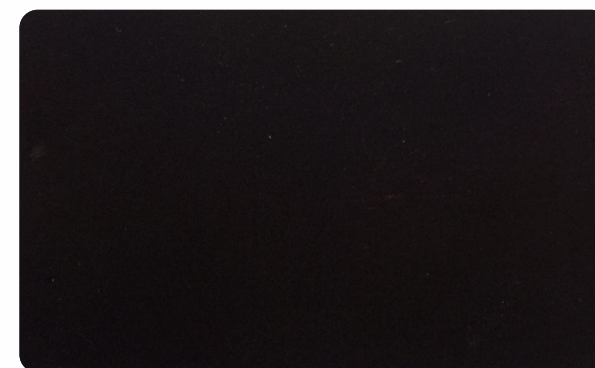
ANTI *Mark*



AM 401 | White Nano



AM 403 | Dark Grey Nano

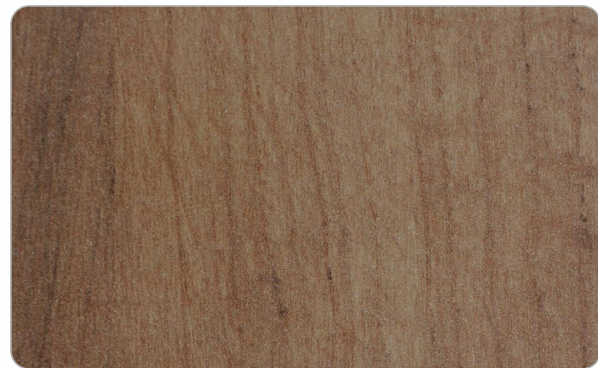


AM 404 | Black Nano

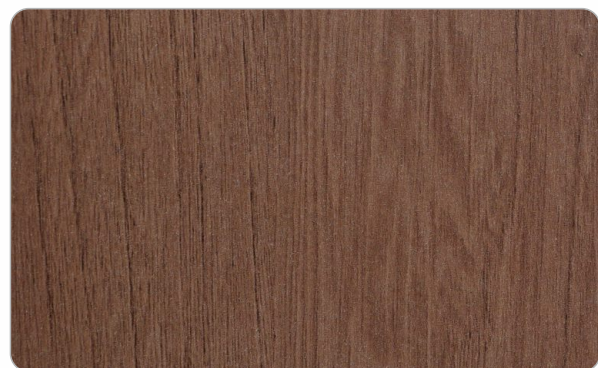


AM 403
Dark Grey

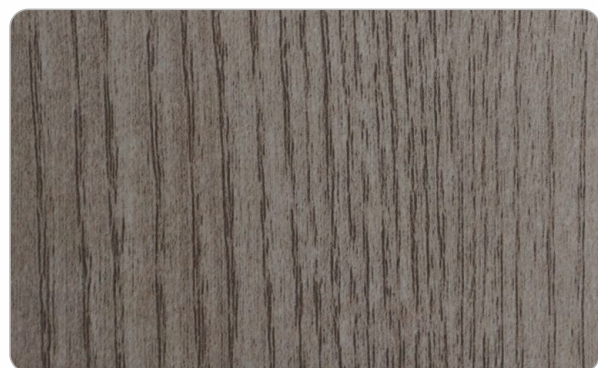
SATIN
Touch



9821 A-155 | Compañia Walnut Light



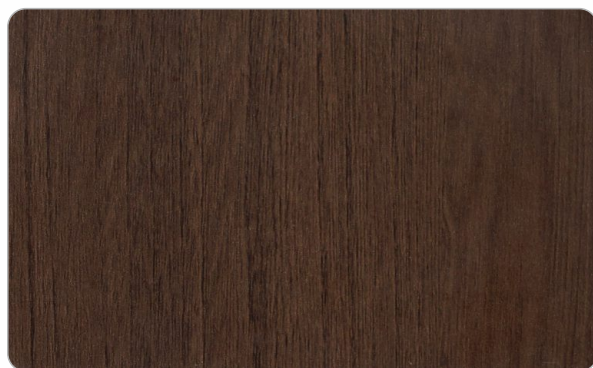
9003 A-155 | Catalonia Ruster



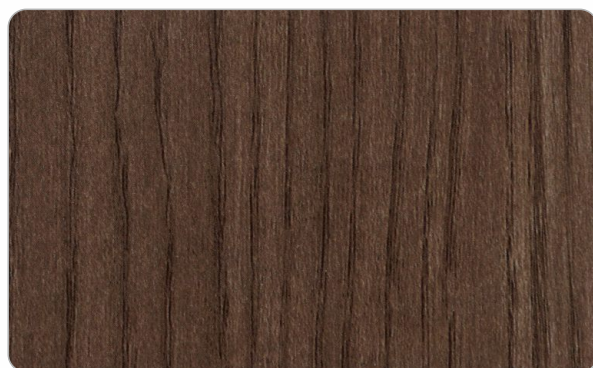
9318 A-155 | Leander Oak



9320 A-155
Radiance Oak



9004 A-155 | Catalonia Ruster tan



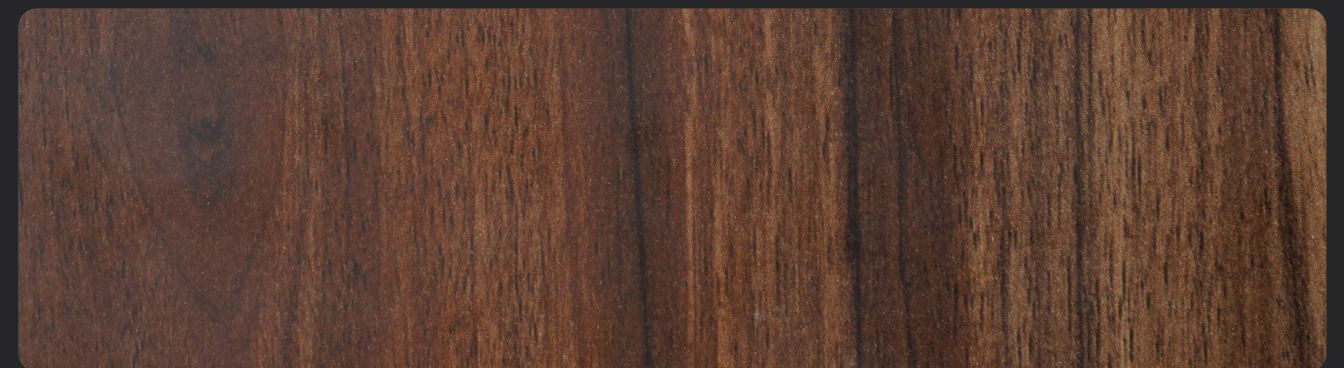
9320 A-155 | Radiance Oak



9056 A-155 | Classiac Cedar



9145 A-155 | Walnut Bronze



9142 A-155 | Exotic Walnut



9145 A-155
Walnut Bronze

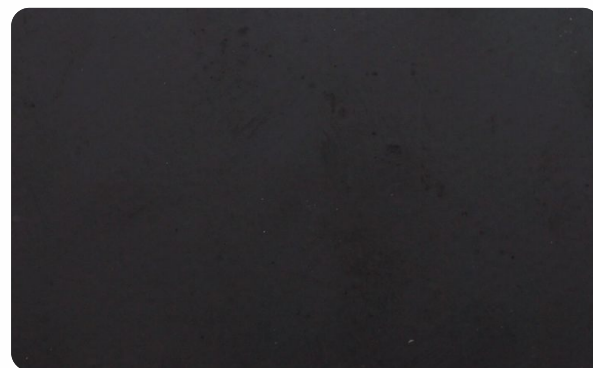
A smooth and velvety texture that not only looks elegant but also feels exquisite to the touch. The satin finish adds a subtle sheen, creating a visually pleasing effect that enhances the overall ambience of any room.

MUTED *Tones*

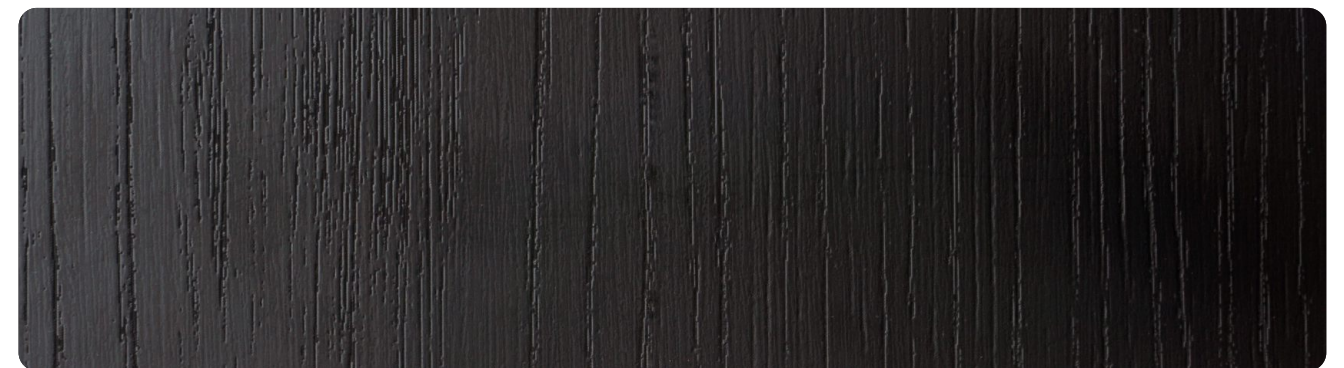
Unveil the beauty of understated luxury with our Muted Tones, Muted greys and soft undertones exude tranquility, providing a backdrop that complements any design scheme.



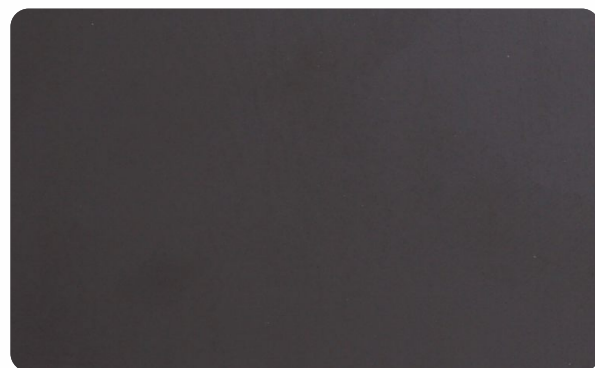
ASH *Mistwood*



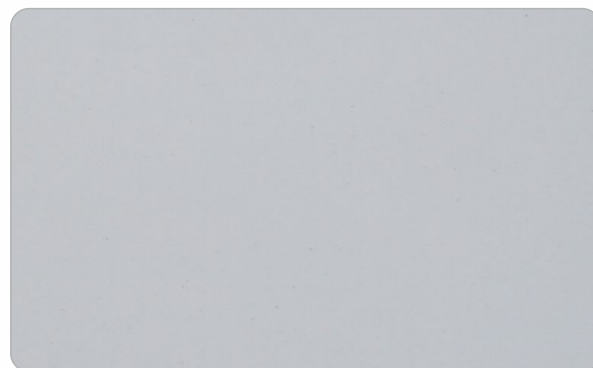
9199 A-155 | Black



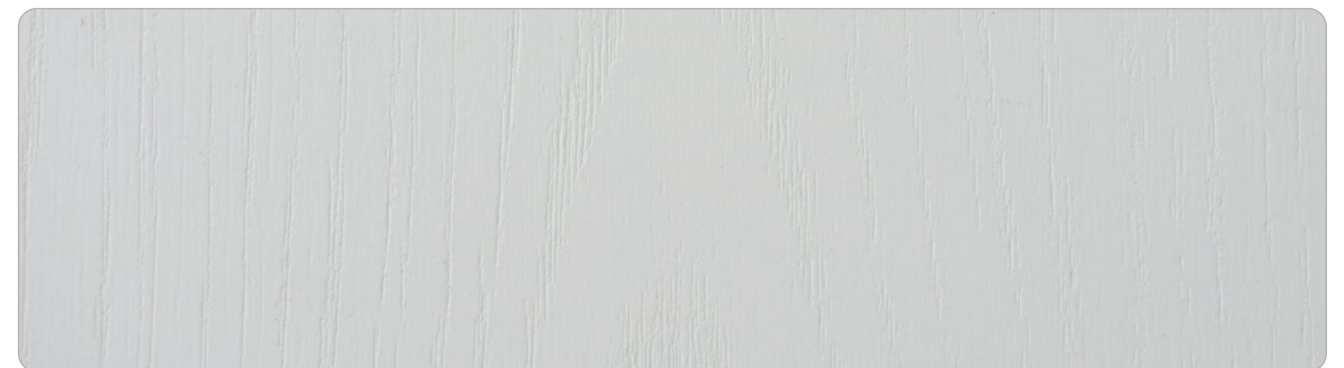
4002 A-193 | Black



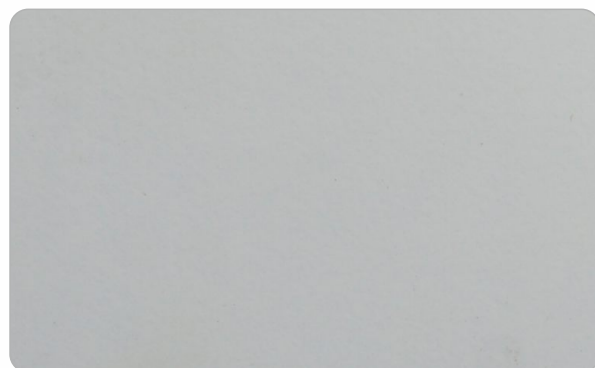
9160 A-155 | Pebble Grey



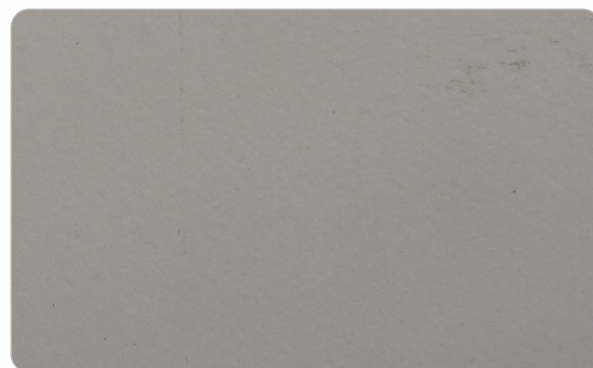
9202 A-155 | Super White



4003 A-193 | Warm White



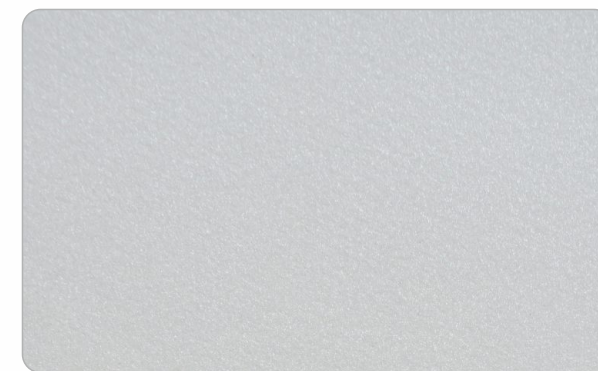
9102 A-155 | Warm White



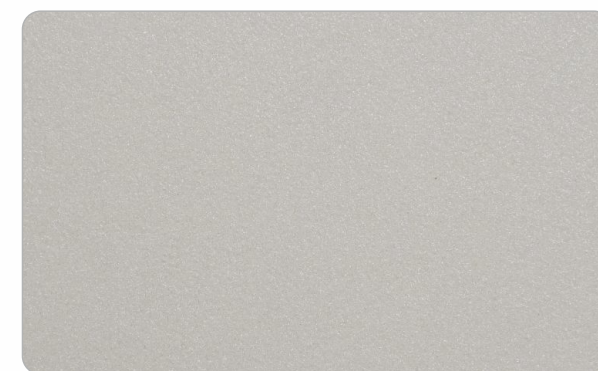
9140 A-155 | Barley



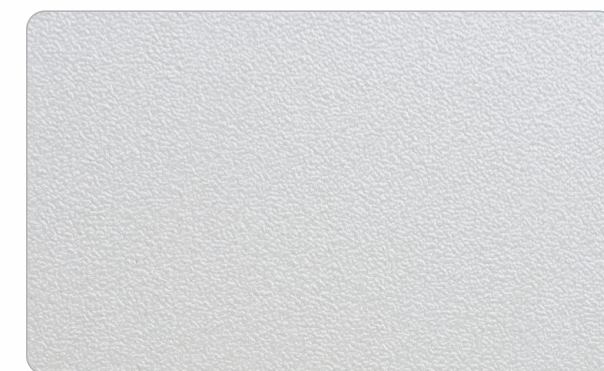
SPARKLING *Series*



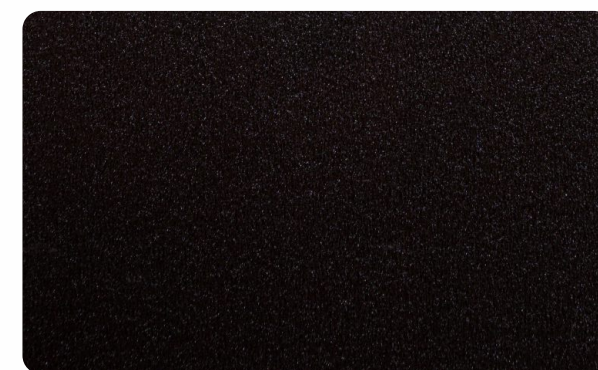
2007 HG | Snow Sparkle



2008 HG | Ivory Sparkle



1007 A-152 | Snow Sparkle



2011 HG | Dark Grey Sparkle



1011 A-152 | Dark Grey Sparkle

Transform your spaces with the mesmerizing charm of the Sparkling Series. Elevate your interiors with laminates that not only reflect your style but also stand the test of time



STONE *High Gloss*

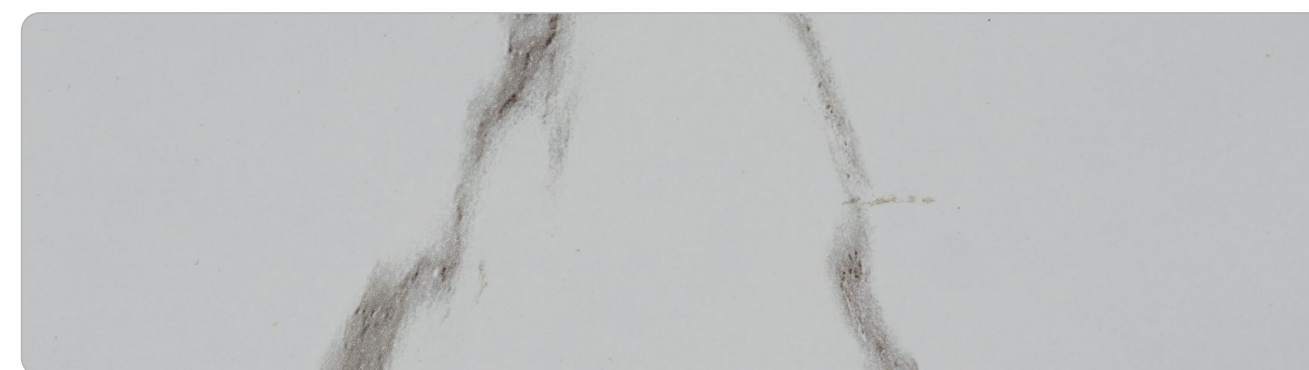


6493 HG
Naro Marmo Stone

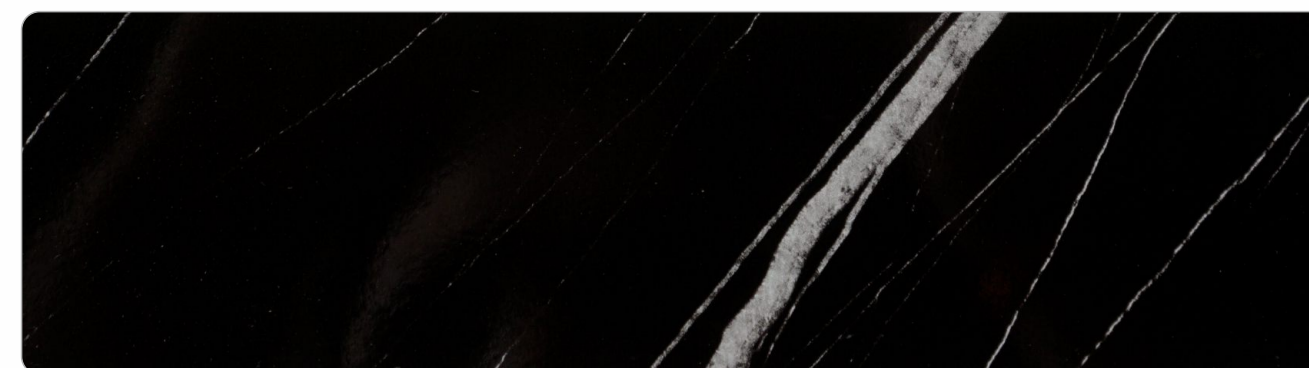
6191 HG
Satvario



6903 HG | Grey Marble



6191 HG | Satvario



6493 HG | Naro Marmo Stone

STONE
Suedes



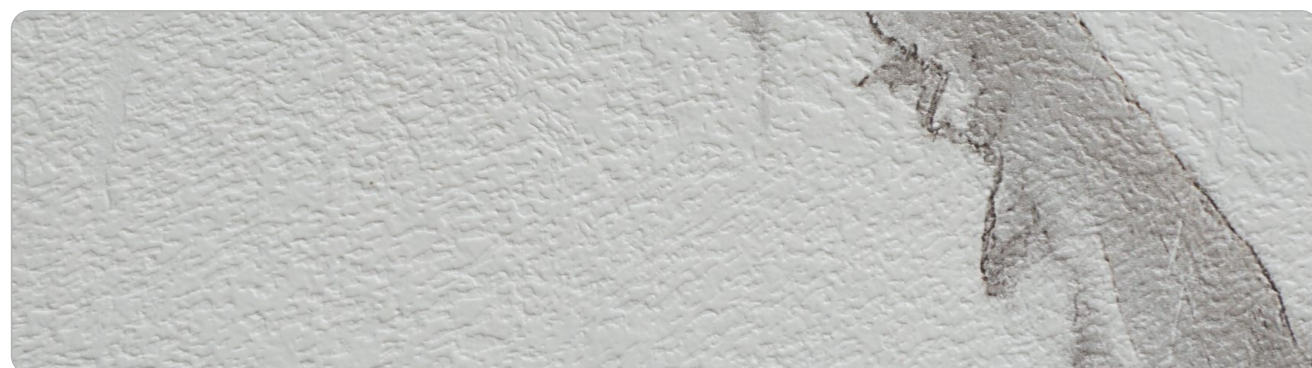
STONE
Texture



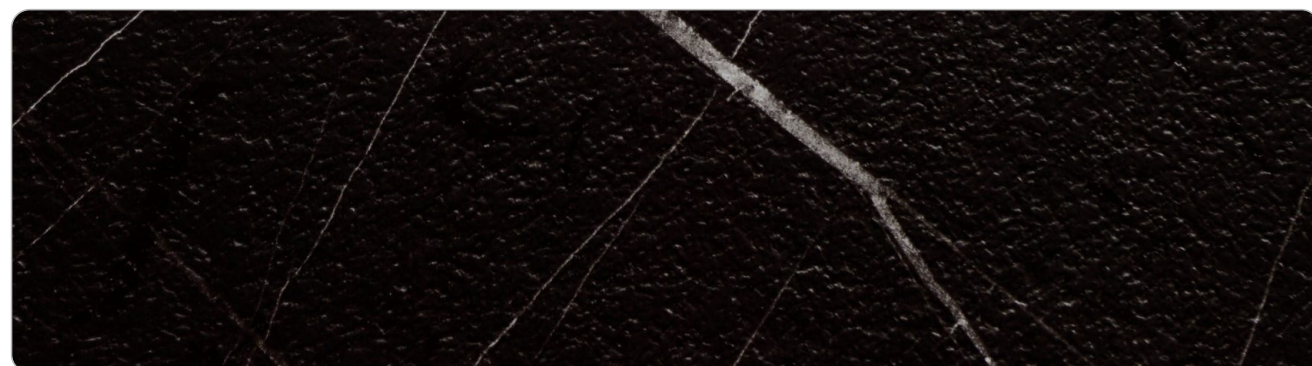
6210 A-121 | Caspio Dark Marble



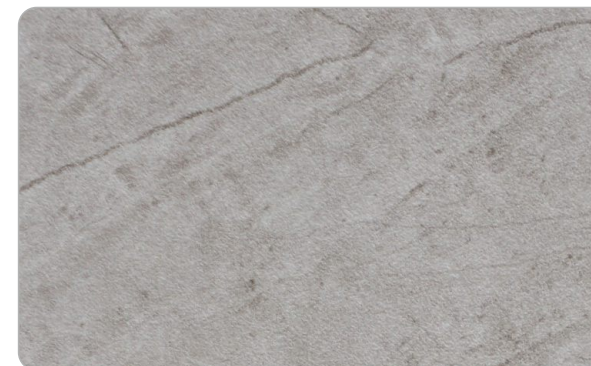
6209 A-121 | Caspio Light Marble



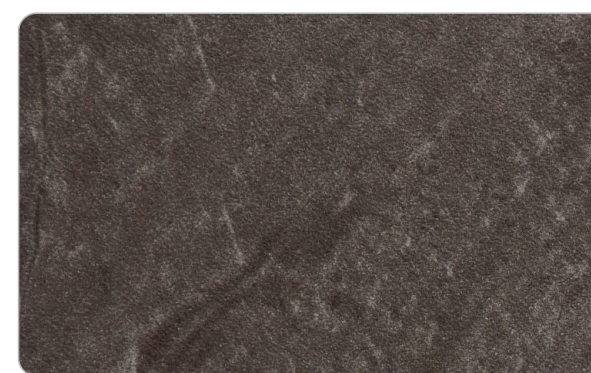
6191 A-121 | Satvario



6493 A-121 | Naro Marmo Stone



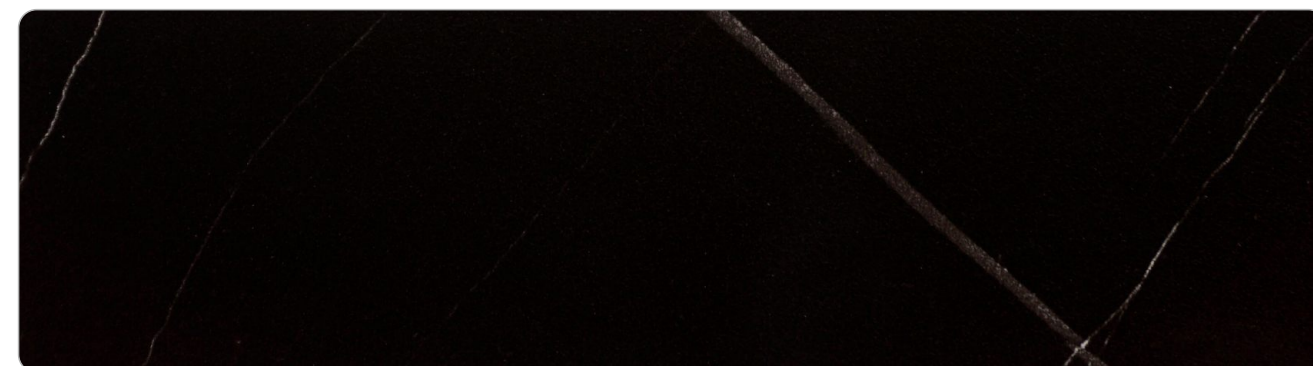
6901 SF | Light Grey Marble



6904 SF | Charcoal Grey Marble



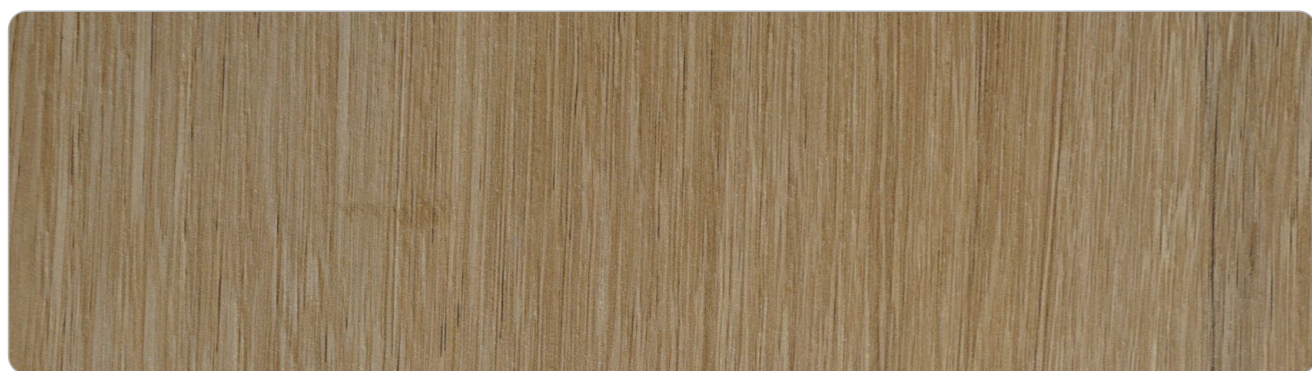
6191 SF | Satvario



6493 SF | Naro Marmo Stone



REAL WOOD *Texture*



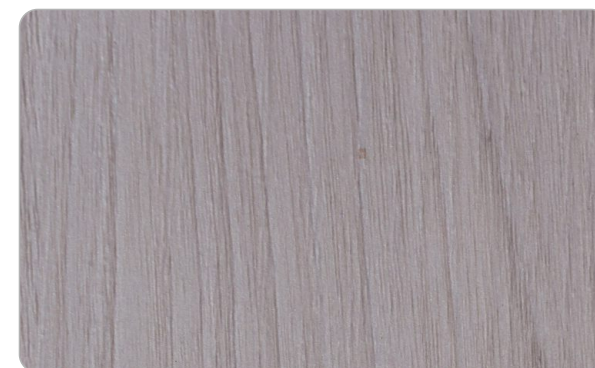
8316 A-192 | Smoked Walnut



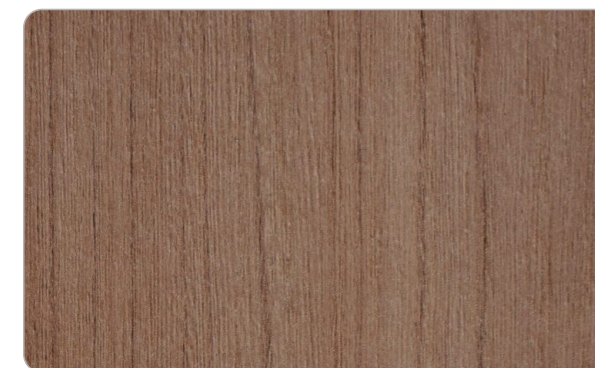
8532 A-192 | Beachy Walnut



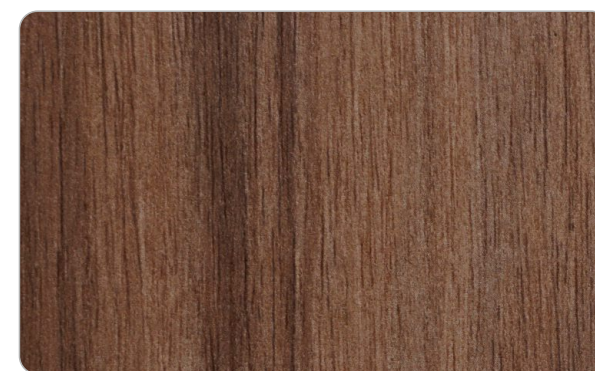
8785 A-192 | Golden Oak



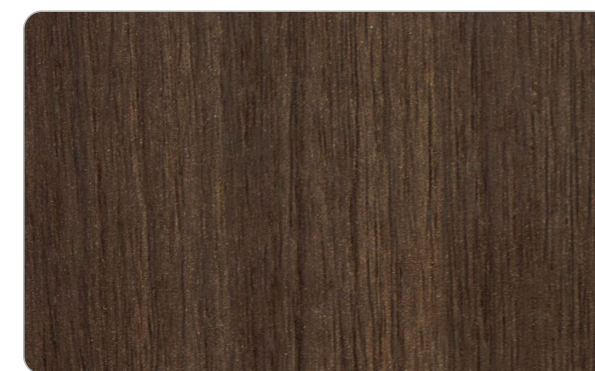
8097 A-192 | Smoked Binca Pecan



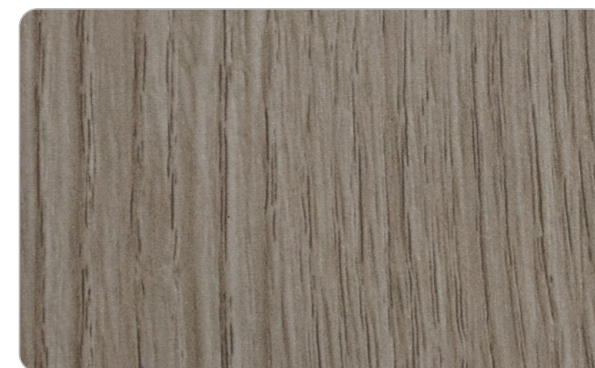
8003 A-192 | Catalonia Ruster



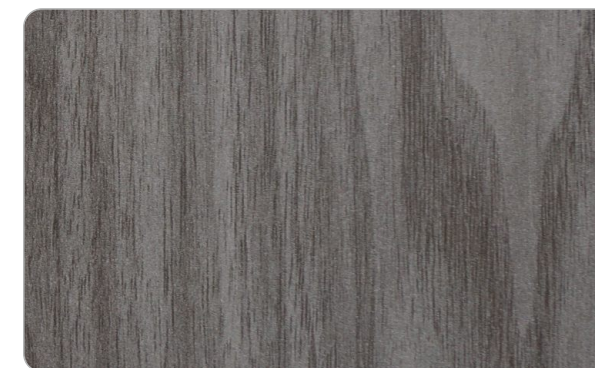
8501 A-192 | Titter Walnut



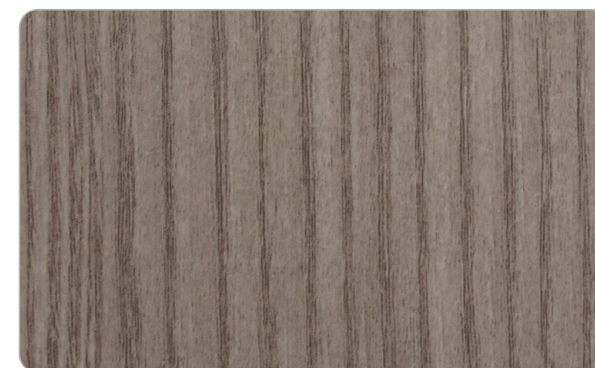
8133 A-192 | Midnight Acacia



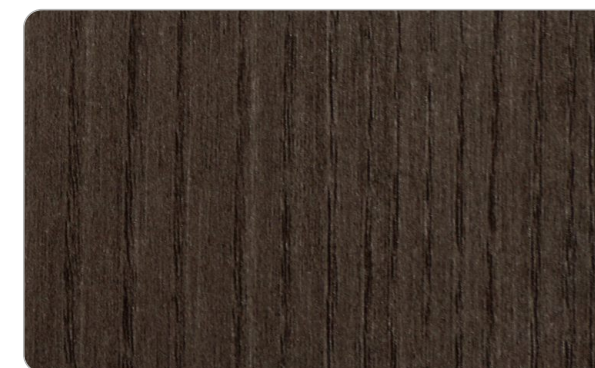
8183 A-192 | Grey Oak



8172 A-192 | Grey Metallic Walnut



8318 A-192 | Leander Oak

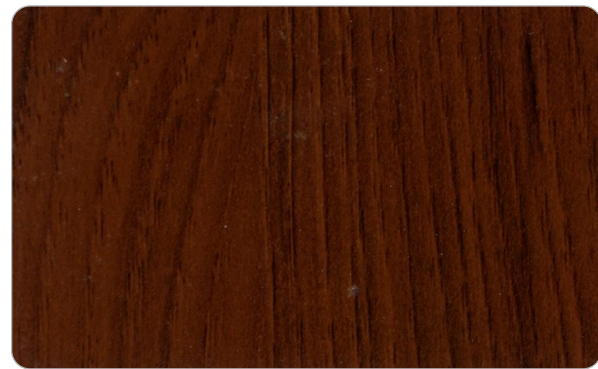


8321 A-192 | Smoked Oak

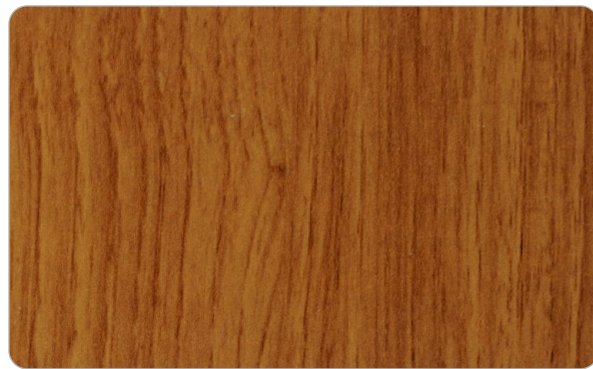
WOOD *High Gloss*



5369 HG
Blonde Base



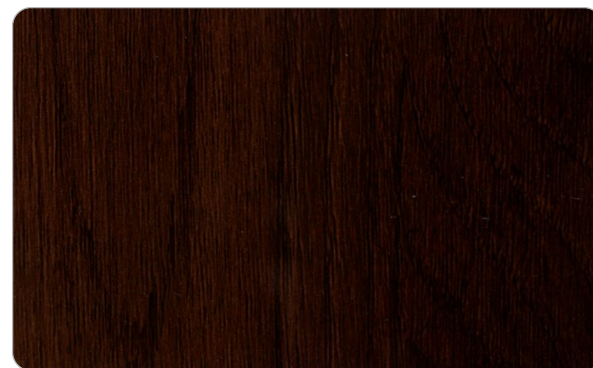
5369 HG | Blonde Base



5370 HG | Embi Pine



5137 HG | Neotenic Oak



5139 HG | Fresh Prune Oak

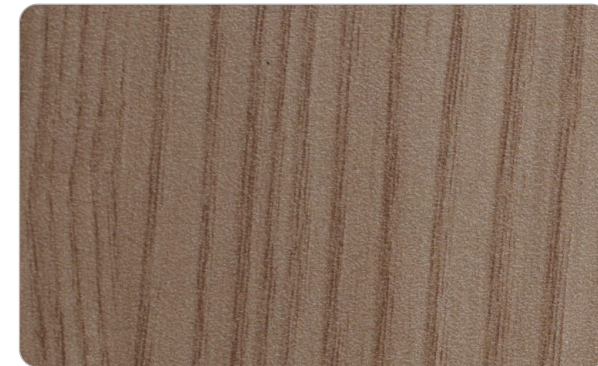
WOOD *Suedes*



7529 SF | Light Marev Ontario Oak



7530 SF | Dark Mille Ontario Oak



7377 SF | Canyon Light



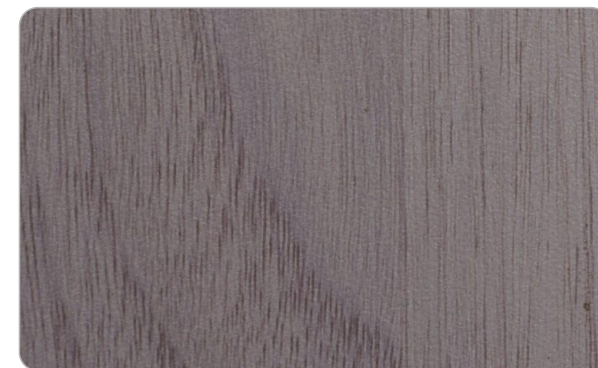
7378 SF | Canyon Brown



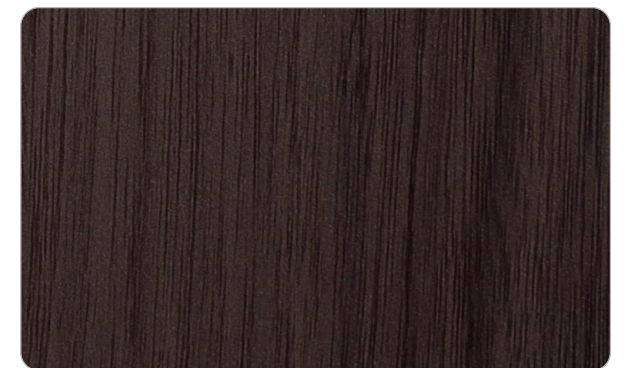
7334 SF | Moon Koawod



7319 SF | Tempest Oak

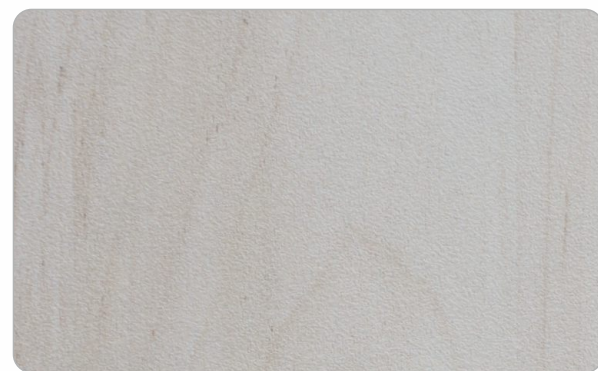


7097 SF | Smoked Binca Pecan

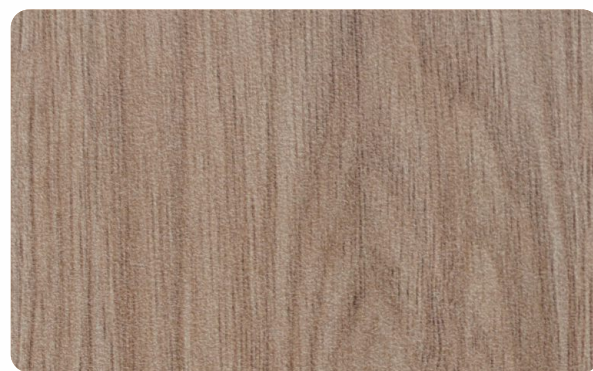


7098 SF | Smoked Brosse Pecan

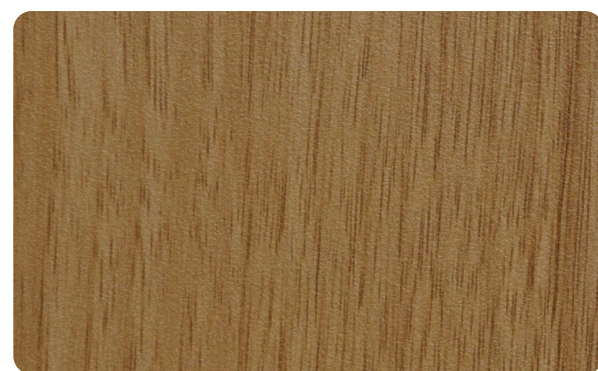
WOOD
Suedes



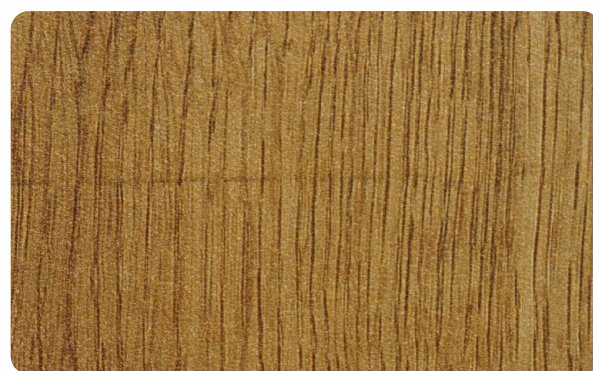
7160 SF | Biscotti



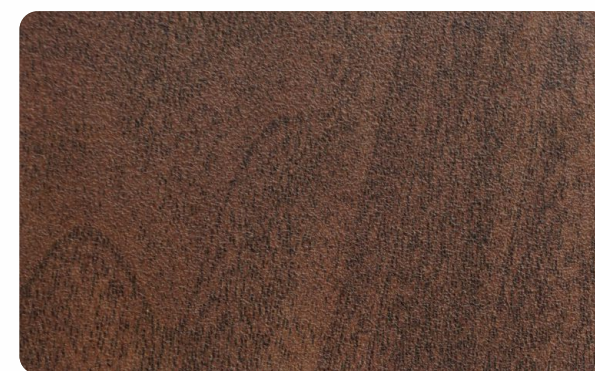
7531 SF | American Kaowood



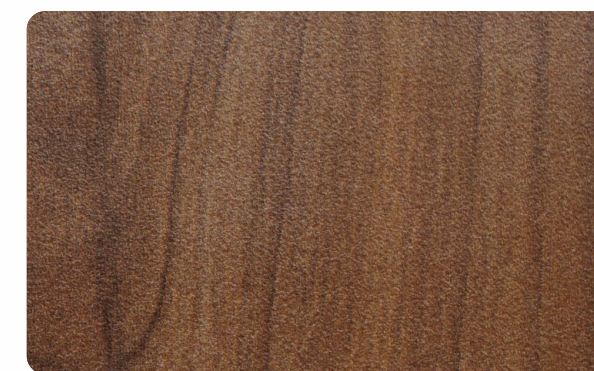
7317 SF | Titter Walnut



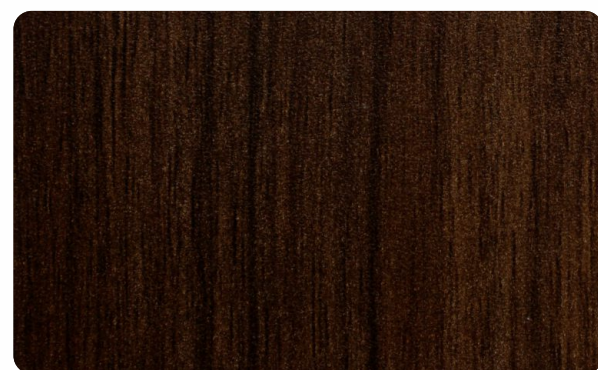
7532 SF | Natural Mordern Oak



7099 SF | Alhambra



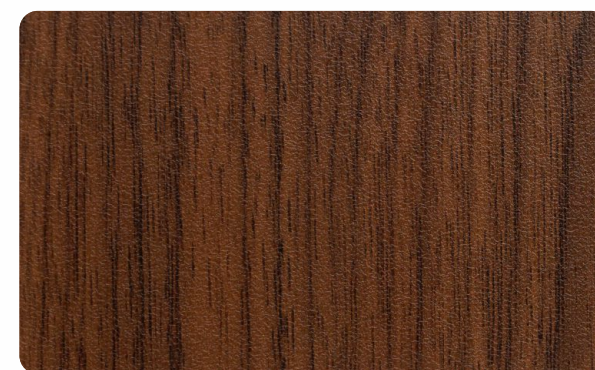
7519 SF | Orchard Cadiz Walnut



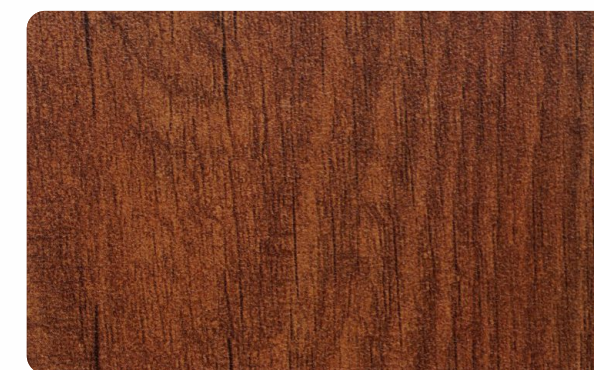
7650 SF | Exotic Walnut



7056 SF | Classiac Cedar



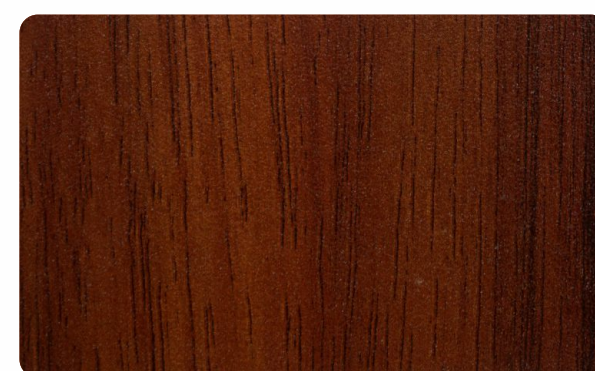
7668 SF | Majestic Oak



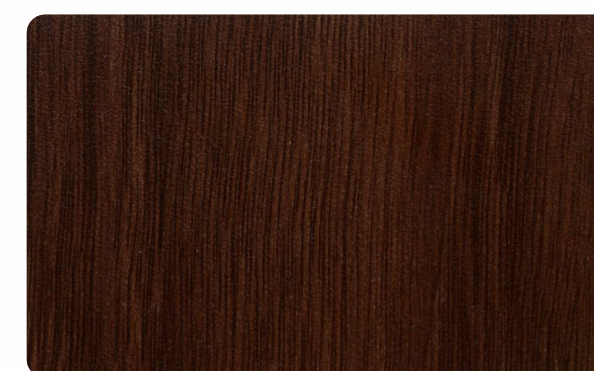
7294 SF | Natural Wood



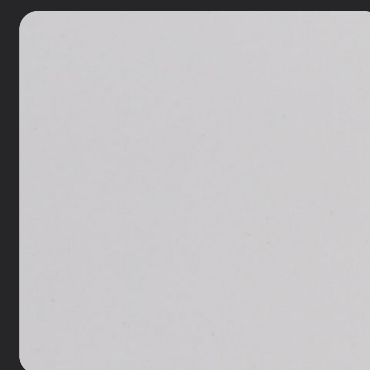
7532 SF
Natural Mordern Oak



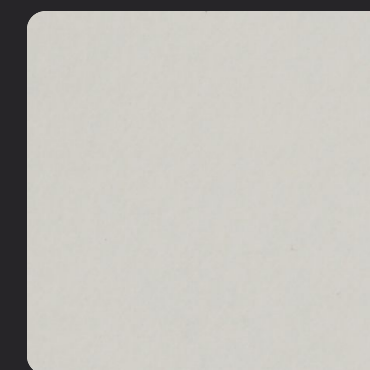
7239 SF | Montana Walnut



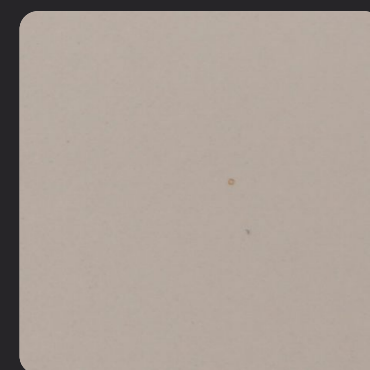
7315 SF | Galston Walnut



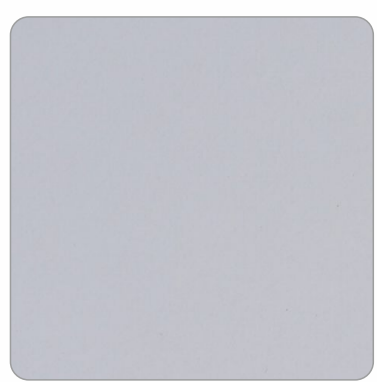
2112 HG / Super White



2114 HG / Frosty White



2140 HG / Beige Mist

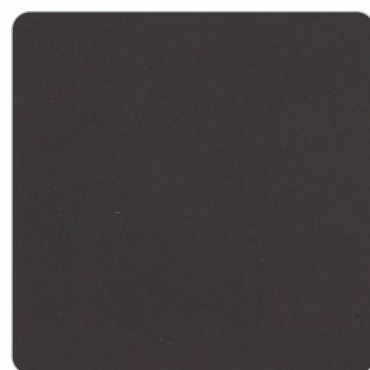


2102 HG / White

PLAIN
High Gloss



2130 HG / Ash Grey



2160 HG / Pebble Grey



2110 HG / Black



SOLID *Pastels*



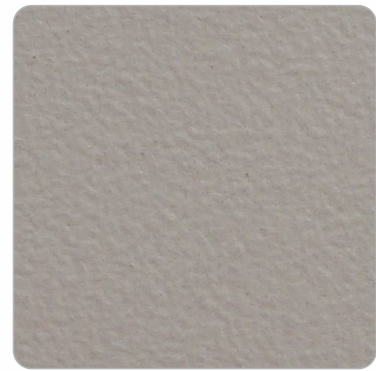
3100 SF | White



3202 SF | Designer White



3102 SF | Warm White



3140 SF | Barley



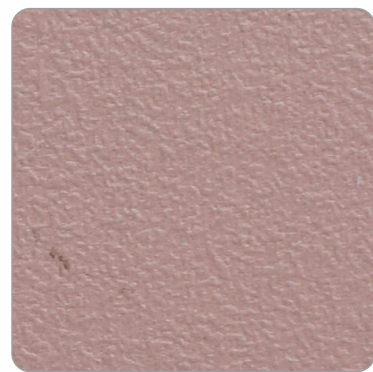
3142 SF | British Buff



3505 SF | Dove Brown



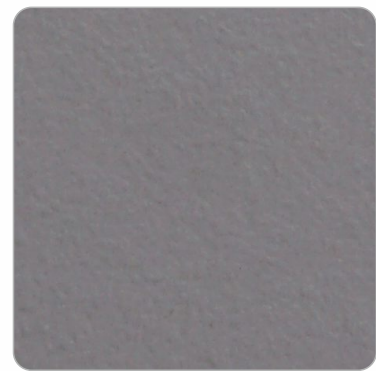
3207 SF | Reach Ivory



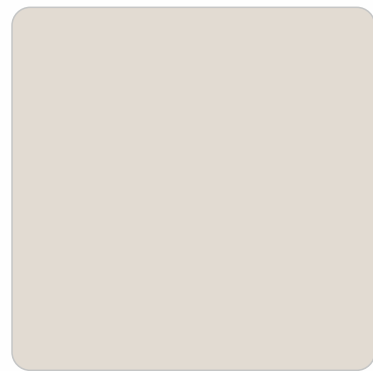
3507 SF | Pale Pink



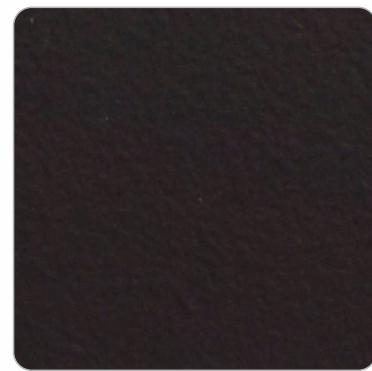
3199 SF | Black



3130 SF | Ash Grey



3170 SF | Royale Gothic



3160 SF | Pebble Grey

SOLID *Plains*



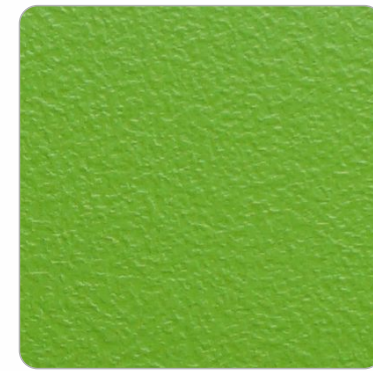
3120 SF | Yellow



3094 SF | Orange



3106 SF | Red



3107 SF | Bright Green



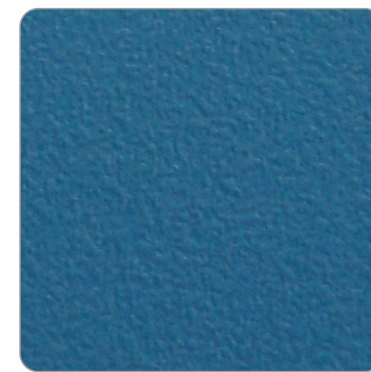
3126 SF | Jungle Green



3512 SF | Smokey Green



3511 SF | Shore



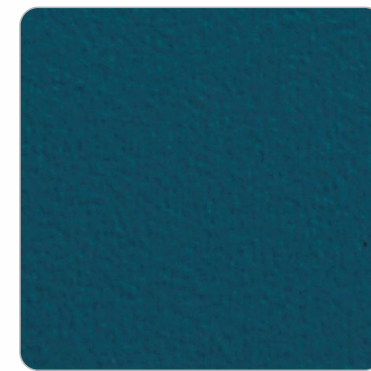
3513 SF | Pacific Blue



3135 SF | Electric Blue



3083 SF | Lilac



3544 SF | Teal Blue



3545 SF | Aqua Frost

INDEX

METALLIC

Sr. No.	Design No.	Finish	Page No.
1	MF 01	Silver	2
2	MF 06	Golden	2

ANTI MARK

Sr. No.	Design No.	Finish	Page No.
3	AM 401	Nano	04
4	AM 403	Nano	04
5	AM 404	Nano	04

SATIN TOUCH

Sr. No.	Design No.	Finish	Page No.
6	9003	A-155	05
7	9004	A-155	05
8	9056	A-155	06
9	9142	A-155	06
10	9145	A-155	06
11	9318	A-155	05
12	9320	A-155	05
13	9821	A-155	05

MUTED TONES

Sr. No.	Design No.	Finish	Page No.
14	9102	A-155	07
15	9140	A-155	07
16	9160	A-155	07
17	9199	A-155	07
18	9202	A-155	07

ASH MISTWOOD

Sr. No.	Design No.	Finish	Page No.
19	4002	A-193	08
20	4003	A-193	08

SPARKING SEIERS

Sr. No.	Design No.	Finish	Page No.
21	2007	HG	10
22	2008	HG	10
23	2011	HG	10
24	1007	A-152	10
25	1011	A-152	10

STONE HIGH GLOSS

Sr. No.	Design No.	Finish	Page No.
26	6191	HG	12
27	6493	HG	12
28	6903	HG	12

STONE TEXTURE

Sr. No.	Design No.	Finish	Page No.
29	6191	A-121	13
30	6209	A-121	13
31	6210	A-121	13
32	6493	A-121	13

STONE SUEDES

Sr. No.	Design No.	Finish	Page No.
33	6191	SF	14
34	6493	SF	14
35	6901	SF	14
36	6904	SF	14

REAL WOOD TEXTURE

Sr. No.	Design No.	Finish	Page No.
37	8097	A-192	16
38	8133	A-192	16
39	8172	A-192	16
40	8183	A-192	16
41	8316	A-192	15
42	8318	A-192	16
43	8321	A-192	16
44	8501	A-192	16
45	8532	A-192	15
46	8785	A-192	15
47	8003	A-192	16

SUEDES WOOD

Sr. No.	Design No.	Finish	Page No.
48	7097	SF	18
49	7098	SF	18
50	7378	SF	18
51	7377	SF	18
52	7319	SF	18
53	7334	SF	18
54	7529	SF	18
55	7530	SF	18
56	7160	SF	19
57	7317	SF	19
58	7056	SF	19
59	7532	SF	19
60	7531	SF	19
61	7650	SF	19
62	7315	SF	20
63	7519	SF	20
64	7099	SF	20
65	7668	SF	20
66	7294	SF	20
67	7239	SF	20

WOODEN HIGH GLOSS

Sr. No.	Design No.	Finish	Page No.
68	5137	HG	17
69	5139	HG	17
70	5369	HG	17
71	5370	HG	17

PLAIN HIGH GLOSS

Sr. No.	Design No.	Finish	Page No.
72	2102	HG	21
73	2110	HG	21
74	2112	HG	22
75	2114	HG	22
76	2130	HG	21
77	2140	HG	22
78	2160	HG	21

SOLID PASTELS

Sr. No.	Design No.	Finish	Page No.
79	3100	SF	23
80	3202	SF	23
81	3102	SF	23
82	3140	SF	23
83	3142	SF	23
84	3505	SF	23
85	3207	SF	23
86	3507	SF	23
87	3199	SF	23
88	3130	SF	23
89	3170	SF	23
90	3160	SF	23

SOLID PLAINS

Sr. No.	Design No.	Finish	Page No.
91	3120	SF	24
92	3094	SF	24
93	3106	SF	24
94	3107	SF	24
95	3126	SF	24
96	3512	SF	24
97	3511	SF	24
98	3513	SF	24
99	3135	SF	24
100	3083	SF	24
101	3544	SF	24
102	3545	SF	24

TECHNICAL & OTHER DATA

Conforms to EN 438-3:2016 Standards

Characteristics	Test Standard	Units	Specified Value	HGS & HGF (FR) Acemica HPL Values
-----------------	---------------	-------	-----------------	--------------------------------------

Physical & Dimensional Properties

Nominal Thickness		mm	As claimed by supplier	0.8
Thickness tolerance	EN 438-2-5	mm	±0.10	0.73 to 0.80
Density	EN ISO 1183-1	gms/cm ³	1.35 Min	1.38 to 1.40
Length & Width tolerance	EN 438-2-6	mm	0	0
Straightness of edges	EN 438-2-7	mm/m	≤1.5 deviation	≤1.5
Squareness of edges	EN 438-2-8	mm/m	≤1.5 deviation	≤1.5
Flatness	EN 438-2-9	mm/m	≤60 deviation	≤50
Dimensional Stability at High temperature	EN 438-2-17	%		≤0.35 ≤0.55
Resistance to Boiling water	EN 438-2-12	Rating	4 Min	4

Mechanical Properties

Resistance to Cracking	EN 438-2-23	Rating	4 Min	4
Impact Resistance		N	20 Min	25
• Small Diameter Ball	EN 438-2-20	mm	≥800	1000
• Large Diameter Ball (drop height for ≤10mm imprint)	EN 438-2-21			
Minimum Bending Radius(Convex & Concave)		cm		20

Surface Properties

Surface Defects	EN 438-2-4	mm ² /m ² mm/m ²	≤1 ≤10	Conforms ≤10
Resistance to surface wear (initial point)	EN 438-2-10	No. of resolutions	150 Min	200
Resistance to Steam	EN 438-2-14	Rating	4 Min	5
Dry heat resistance (160 Degree C)	EN 438-2-16	Rating	4 Min	5
Scratch Resistant	EN 438-2-25	N	2.0 Min	3
Stain Resistant		Rating	5 Min	5
• Group - 1 & 2	EN 438-2-26		4 Min	5
• Group - 3				
Light fastness under artificial light, Grey Scale	EN 438-2-27	Rating	4 to 5	4 to 5

Fire Performance

Reaction to Fire	EN 13501-1	Class	-	Bs1 d0 for FR & Cs1 d0 for GS
Thermal Conductivity	EN 12524	W/m ² K		0.24

Health and Environmental Characteristics

Food safe	EN 13130-1			YES
Formaldehyde emission (release)	EN 717-1/UL 2818	Class	-	E 1/7.3ppb
Volatile Organic Compounds (VOC) Emission	ISO 16000-9	Class	-	A
Antibacterial Properties	JIS Z 2801	Reduction in %	99.99 Min	99.99



ANTIBACTERIAL LAMINATE

- Opt for high level of hygiene
- Keep you surrounding more safe
- Reduces the Risk of Cross-Contamination
- Safe for Use in a Variety of Environments
- Food-Contact Approved



FR GRADE LAMINATE

- HPL with Fire Retardant capacity
- Non Toxic Flames
- Self-extinguishing Material
- Impregnated with special resin for delay in ignition



POSTFORMING LAMINATE

- Give seamless look to your interiors
- Creates unifying appearance of furniture
- Long lasting edge solution for some decors
- Longer lifespan, robust fabrication process, least maintenance



LAB GRADE LAMINATE

- Highly Resistant To Chemicals
- Highly Scratch Resistance
- Highly Abrasion Resistance
- Low Maintenance



COMPACT LAMINATE

- Highly resistant to wet conditions
- Best abbreviation ratio for high wear and tare areas
- Best situated for kitchen tops and wet rooms
- Heat & Smoke resistant for safe application
- Variety of colors and decors to choose from



EXTERIOR LAMINATE

- Highly Durable in exterior application
- Easy to maintain and clean exterior cladding
- Easy to install with variety of decors to choose from.



BESPOKE DEVELOPMENT

- Special Design Service
- Dedicated Product Development
- OEM Offered with wide range of designs
- Total spectrum of Solution of HPL



ANTI FINGERPRINT

- Acrylic Anti-Fingerprint Coating
- Smudge Resistant
- Transparent melamine coating